

THIS IS



CLAPHAM



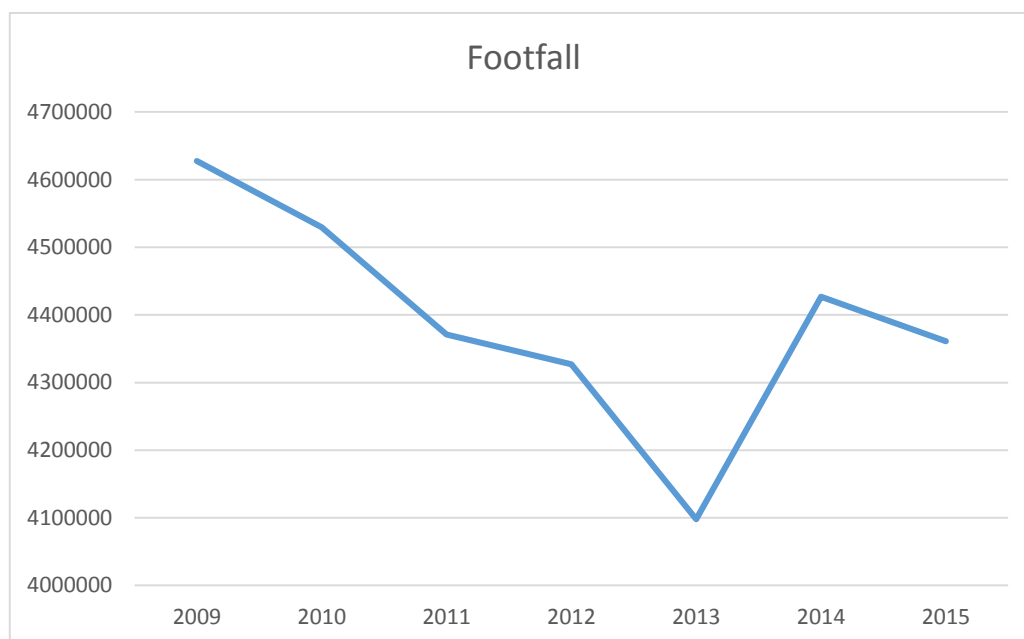
EST. 871

**This is Clapham  
Footfall Report  
April 2016**

The following footfall data is collected via an automated camera that records the number of people passing through a part of the high street near the Two Brewers.

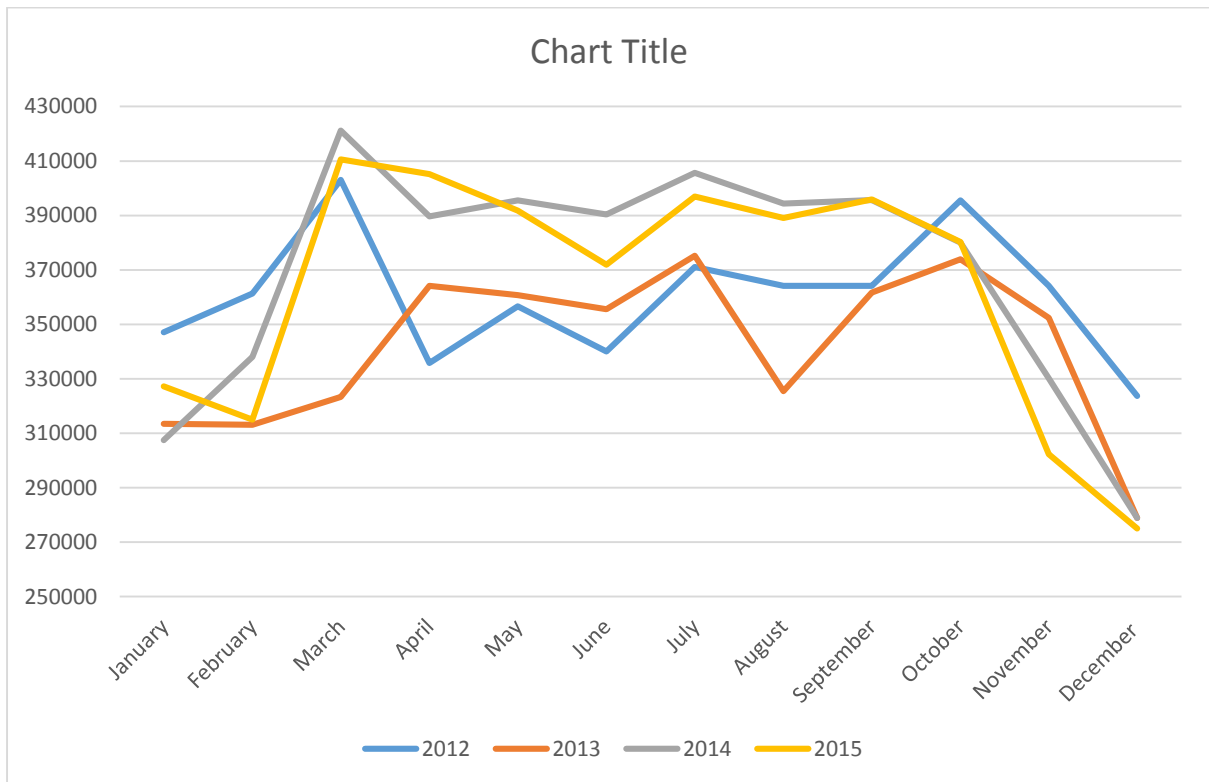


### Annual Footfall Totals



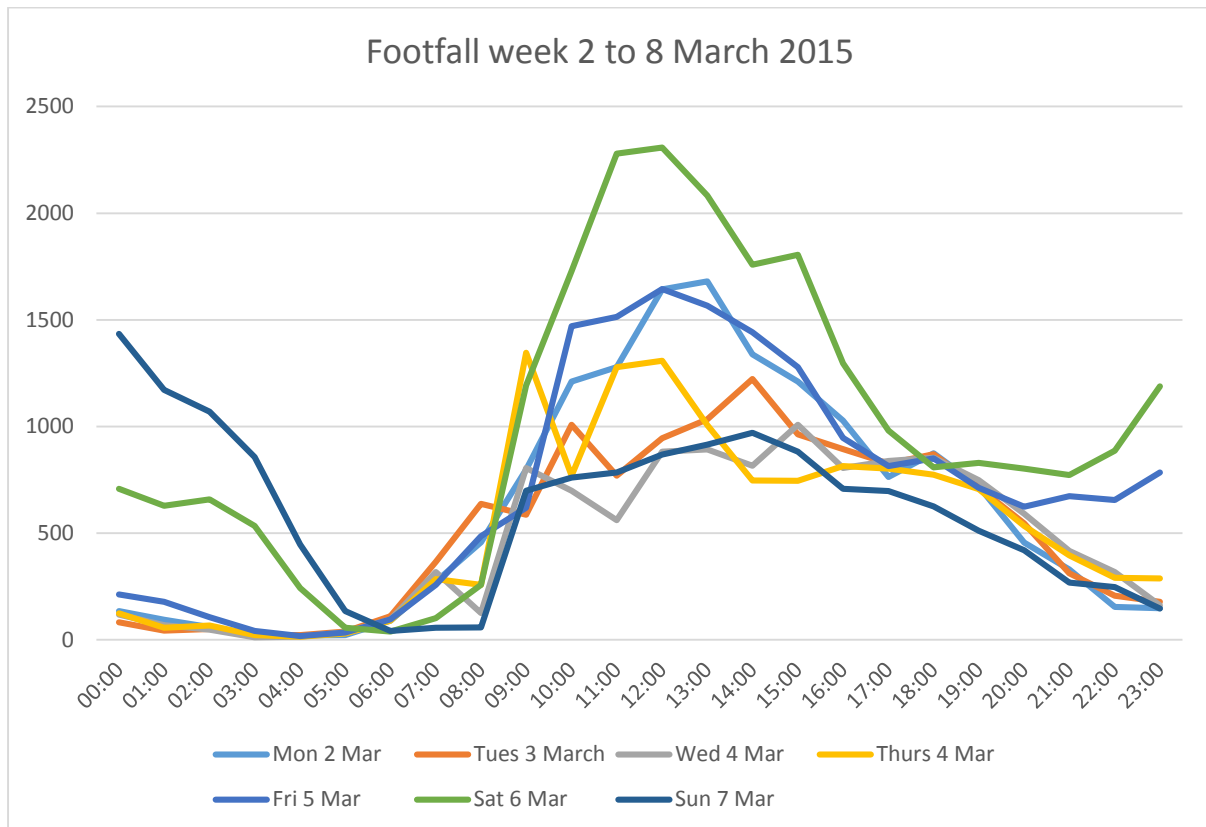
The graph above shows the annual footfall totals for Clapham high Street. Footfall in this part of Clapham fell between 2009 and 2013, but recovered sharply in 2014.

## Monthly Footfall Data 2012 to 2015



The graph above shows the Monthly footfall data for the last four years. Footfall in 2014 and 2015 has recovered with peak periods between March and October. Footfall in Clapham has been consistently lower in the winter months, peaking consistently in March.

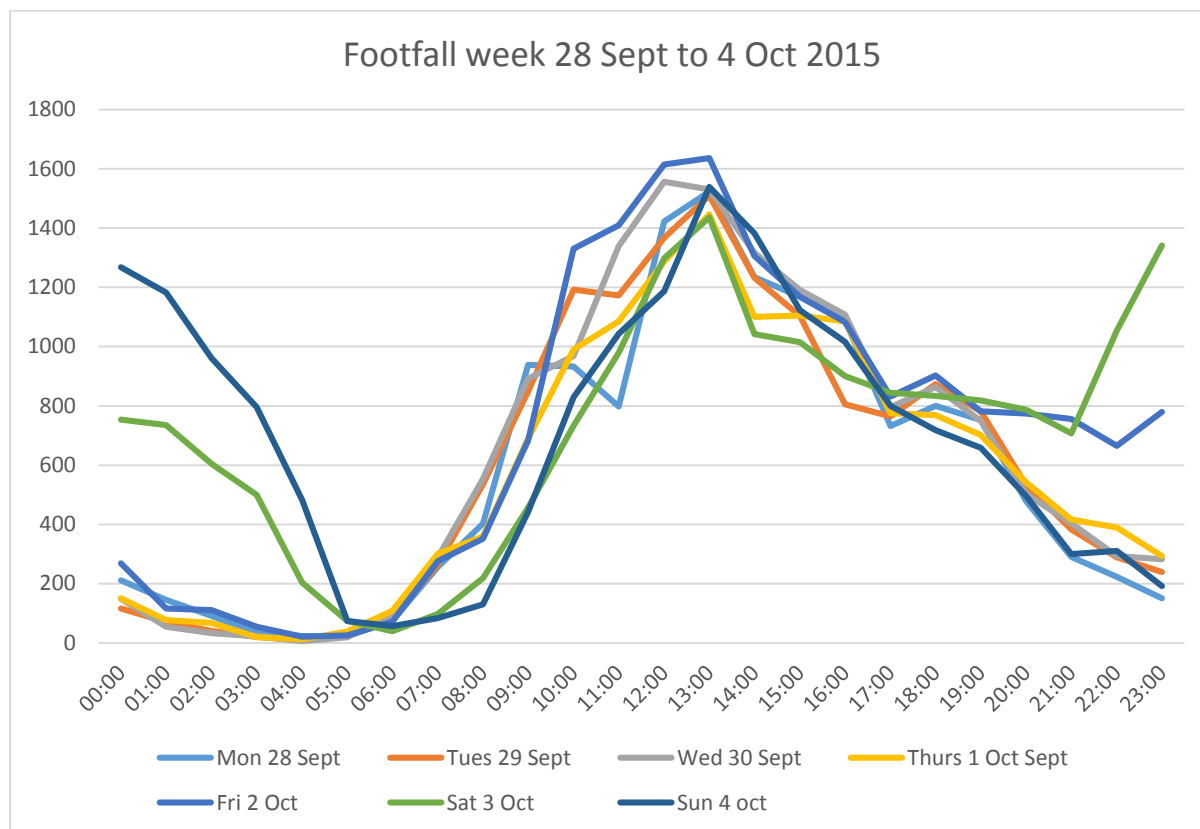
## 24 hour Footfall Analysis from Monday 2 March to Sunday 8 March 2015



The graph above is a snap shot of a week of footfall data from Monday 2 March 2015 to Sunday 8 March. It shows that footfall reached a peak of nearly 2,500 at 12am on Saturday 6 March.

Footfall is generally at its highest between 11am and 2pm throughout the week. Outside of these peak hours there is also an increase in the evening at weekends.

## 24 hour Footfall Analysis from Monday 28 Sept to Sunday 4 October 2015

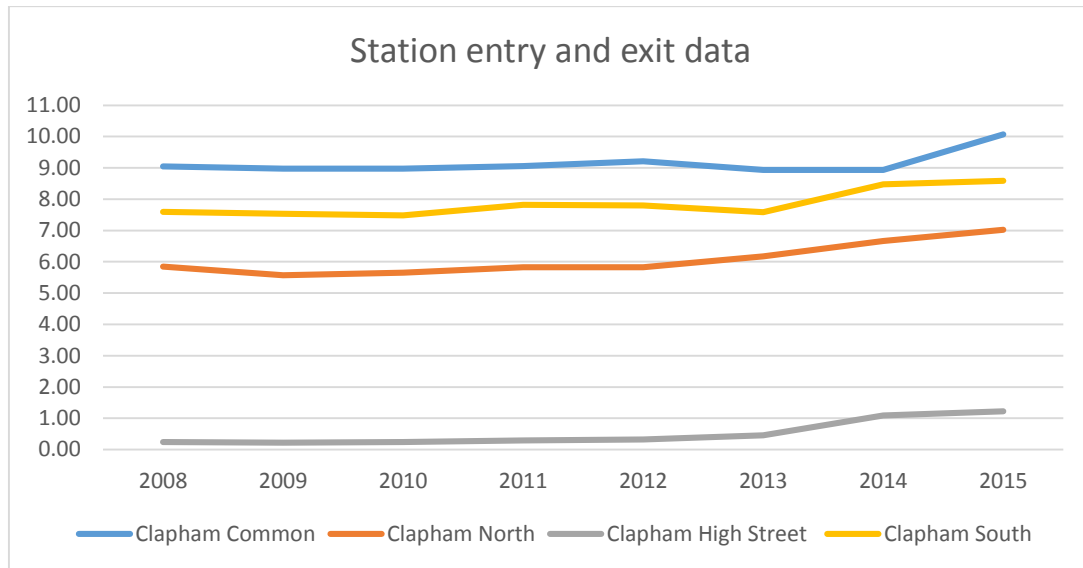


This 24 hour analysis shows that footfall peaks consistently around 1pm in the afternoon through the week, reaching over 1,600 people on Friday 2 October 2015.

In the evening, Friday and Saturday nights are the busiest time with footfall at its highest between 10pm and 1am on Saturday 3 October into Sunday. Friday 2 October was less busy, but footfall was still almost three times higher than the weekday average at 11pm.

## Station Entry and Exit Data

The following data is provided by TFL and counts the number of people entering and exiting the station.



Between 2014 and 2015 there has been a significant rise in the number of people using all Clapham underground and overground services.

- The number of people using the Clapham Common Tube Station rose by over 1 million people between 2014 and 2015 from under 9 million to over 10 million users.
- Between 2012 and 2015 the number of people using Clapham North Station has increased from under 6 million to over 7 million in 2015.
- Between 2013 and 2015 the number of people using Clapham High Street Overground Station has more than doubled from under 0.5 million to over 1 million.

	2008	2009	2010	2011	2012	2013	2014	2015
<b>Clapham Common</b>	9.05	8.97	8.97	9.06	9.21	8.94	8.94	10.07
<b>Clapham North</b>	5.85	5.57	5.65	5.83	5.82	6.17	6.67	7.03
<b>Clapham High Street</b>	0.24	0.22	0.24	0.29	0.32	0.46	1.09	1.22
<b>Clapham South</b>	7.60	7.53	7.48	7.82	7.80	7.58	8.47	8.58
<b>Brixton</b>	20.93	20.88	21.28	22.51	24.82	27.22	29.37	30.83

**For More information about this report or to request further analysis please  
Contact**

This is Clapham Business Improvement District  
161-167 Clapham Manor Street  
SW4 6DB

0207 622 5905

[info@thisisclapham.co.uk](mailto:info@thisisclapham.co.uk)

[www.thisisclapham.co.uk](http://www.thisisclapham.co.uk)

@thisisclapham

[www.facebook.com/thisisclapham](https://www.facebook.com/thisisclapham)