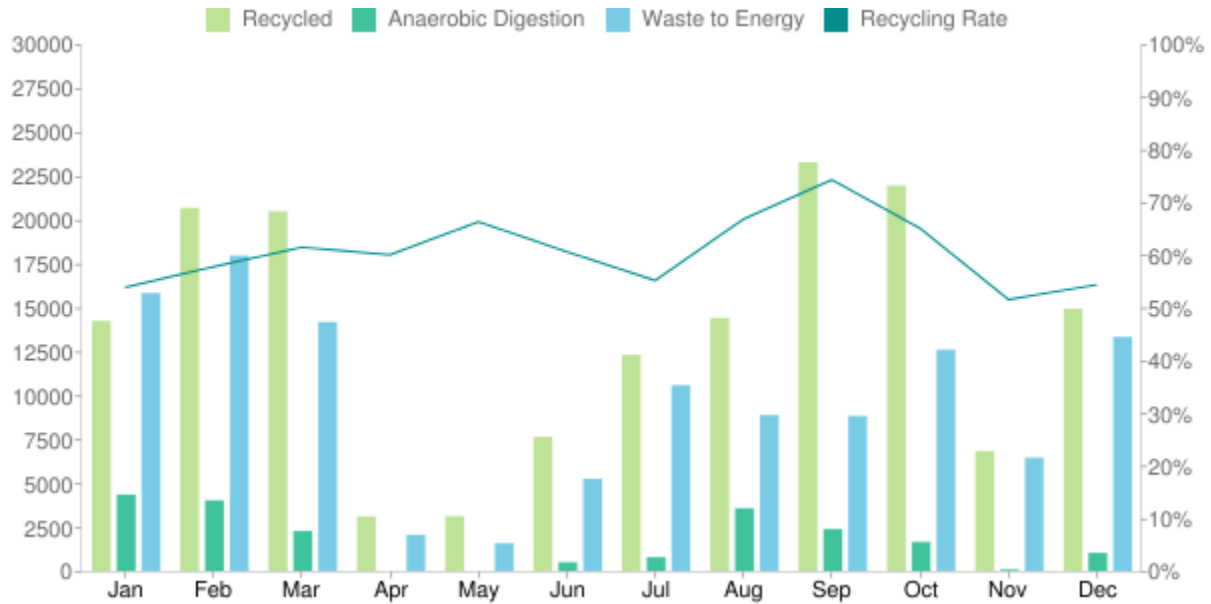


Material collected (kgs)

FROM JANUARY 2020 TO DECEMBER 2020



Jan	Feb	Mar	Apr	May	Jun	Jul	Aug	Sep	Oct	Nov	Dec	Total
14,235	20,675	20,475	3,100	3,119	7,632	12,300	14,405	23,269	21,945	6,820	14,925	162,900
4,350	4,020	2,275	0	0	500	785	3,570	2,382	1,650	80	1,035	20,648
15,825	17,950	14,175	2,050	1,575	5,250	10,575	8,875	8,825	12,600	6,450	13,325	117,475
54%	58%	62%	60%	66%	61%	55%	67%	74%	65%	52%	54%	61%

Material recycled

FROM JANUARY 2020 TO DECEMBER 2020

CARDBOARD

36,250 kg

JUNK REMOVAL

300 kg

COFFEE GROUNDS

3,062 kg

MIXED RECYCLING

113,875 kg

FOOD RECYCLING

17,585 kg

PAPER SHREDDING

575 kg

GENERAL WASTE

117,275 kg

WEEE AND TONER

25 kg

GLASS

11,830 kg

Key statistics

	THIS MONTH	PAST 12 MONTHS
TREES SAVED:	139	1,295
CO2 TONNES SAVED:	21	220
KWH ENERGY PRODUCED:	7,627	76,702
RECYCLING RATE:	54%	61%